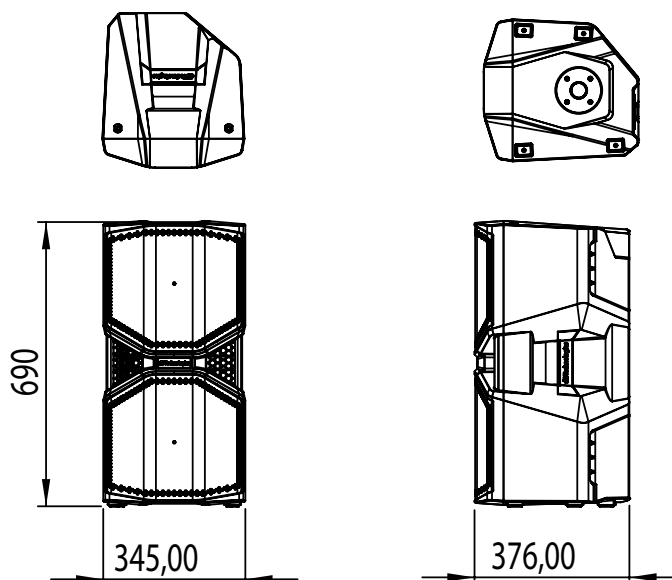
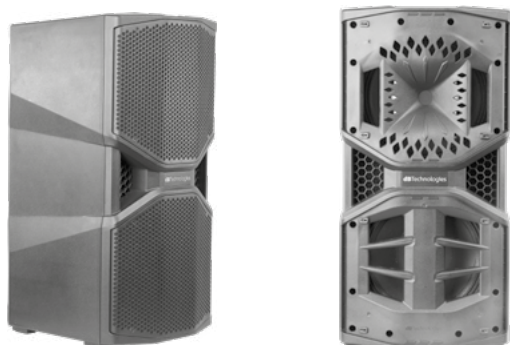


OPERA  
**REEVO 212**  
 Quasi 3-way Active Speaker



**MAIN FEATURES**

- Quasi 3-way thanks to the phase plug
- Coaxial driver
- Neodymium transducers
- 1050 W RMS / 2100 W Peak DigiPro G2 Amplifier
- 133 dB Max SPL
- Flying points
- FIR Filters
- Low noise reflex port
- Aluminum heatsink
- Made in Italy

**DESCRIPTION**

OPERA REEVO 210 and OPERA REEVO 212 deliver an astonishing sound pressure level with touring-grade sound definition and a remarkable low-end extension in a compact and freshly designed enclosure accessible to anybody who wants great sound anywhere. The Quasi 3-way configuration delivers a vigorous yet pristine sound.

Both models are equipped with a Class-D DigiPro G2 amplifier which delivers an impressive 1050 W RMS and 2100 W Peak power and features advanced DSP processing where FIR linear phase filters allow the systems to achieve a coherent audio performance, rendering an uniform and crystal-clear sound. Both cabinets have a very compact size compared to the output SPL of 132.5 dB (REEVO 210) and 133 dB (REEVO 212), yet featuring 2x Neodymium woofers (10" for REEVO 210 and 12" for REEVO 212) and one 1.75" coaxial compression driver, keeping the overall weight down to 17.2 Kg / 37 lbs (REEVO 210) and 20.4 Kg / 44 lbs (REEVO 212).

When it comes down to business, Opera Reevo outstanding voicing ensures seamless and transparent rendition of any speech, where intelligibility is mission critical (such as corporate events or houses of worship) with a very wide nominal dispersion: 100°x80° (REEVO 212) and 100°x90° (REEVO 210) granting greatly consistent coverage from every listening position.

<b>Speaker Type</b>	Quasi 3-Way Active Speaker
<b>Frequency Response [-10dB]</b>	48 - 20.000 Hz
<b>Frequency Response [- 6dB]</b>	52 - 19.200 Hz
<b>Max SPL</b>	133 dB
<b>HF</b>	1" Exit CD, 1.75" v.c.
<b>Type HF</b>	Compression Driver
<b>Directivity (HxV)</b>	100°x80°
<b>Horn</b>	Asymmetrical Horn
<b>LF</b>	2x 12" Neo, 2.5" v.c.
<b>Amp Technology</b>	Class-D DigiPro G2 with SMPS
<b>RMS Power</b>	1050 W (525W + 525W)
<b>Peak Power</b>	2100 W (1050W + 1050W)
<b>Controller</b>	DSP 28/56 bit
<b>AD/DA Converter</b>	24 bit/48 KHz
<b>CrossOver Frequency</b>	1260 Hz
<b>Limiter</b>	Peak, RMS, Thermal
<b>Advanced DSP Functions</b>	Linear Phase FIR Filters
<b>Signal Input</b>	1x Combo (XLR/Jack 6.3 mm) Line
<b>Signal Output</b>	1x XLR Male ( True Link )
<b>Controls</b>	Gain (rotary) Preset (Flat, Playback, Wedge)
<b>Housing</b>	Polypropylene
<b>Grille</b>	Full grille
<b>Handles</b>	1 on left Side, 1 on Top
<b>Rigging Points</b>	2x M10 on Top + 1x M10 on Back
<b>Pole Mount</b>	D36 mm
<b>Width</b>	345 mm (13.58 in)
<b>Height</b>	690 mm (27.17 in)
<b>Depth</b>	376 mm (14.8 in)
<b>Weight</b>	20.4 kg (44 lbs)